



TECHNOLOGIES

SP8 Series Reverse Osmosis

15-45 USgpm SPECIFICATIONS

ASLAN TECHNOLOGIES SP8 (single-pass, horizontal array) Series Reverse Osmosis systems are available in **17.5-45 USgpm** (95,000-245,000L/d) nominal capacities. Recovery up to 80% is possible by using adjustable recycle and high capacity pump which also ensures sufficiently high fluid velocities across the membranes to minimize fouling. Actual pressures and flow rates are dependent on source water quality. Contact your ASLAN TECHNOLOGIES representative for further information on operational parameters as they pertain to your water source.

Features

- Custom specifications for high recovery based on source water
- Compact piping arrangement for ease of installation and operation
- Integral 5µm Cartridge Filter
- Automatic operation, low pressure flush, and Aslan™ Refresh system to reduce cleaning
- Flow indicators and pressure gauges on all critical points
- Rugged stainless steel piping, vessels, and frame for long-lasting, reliable operation
- Clean-in-place (CIP) tank, combination CIP/Feed pump, integral CIP plumbing
- Low feed pressure safety shutoff
- Sufficient pump pressure for cold water applications to meet rated flow

Controls

- NEMA-4 control panel, fuse or circuit breaker protection on all power legs, inspected to UL or CSA standards
- PLC controlled, alarm and status indication lamps with manual overrides
- Customer supplied contact closure initiates START sequence of the RO (tank level switch or pressure switch on a pressure retention tank)
- Customer supplied contact opening initiates STOP sequence of the RO
- Automatic feed flush and Refresh on shutdown
- Automatic timed Refresh every 30min during idle time
- Low feed pressure switch (20psi standard) STOPS the system to avoid dry run

Applications

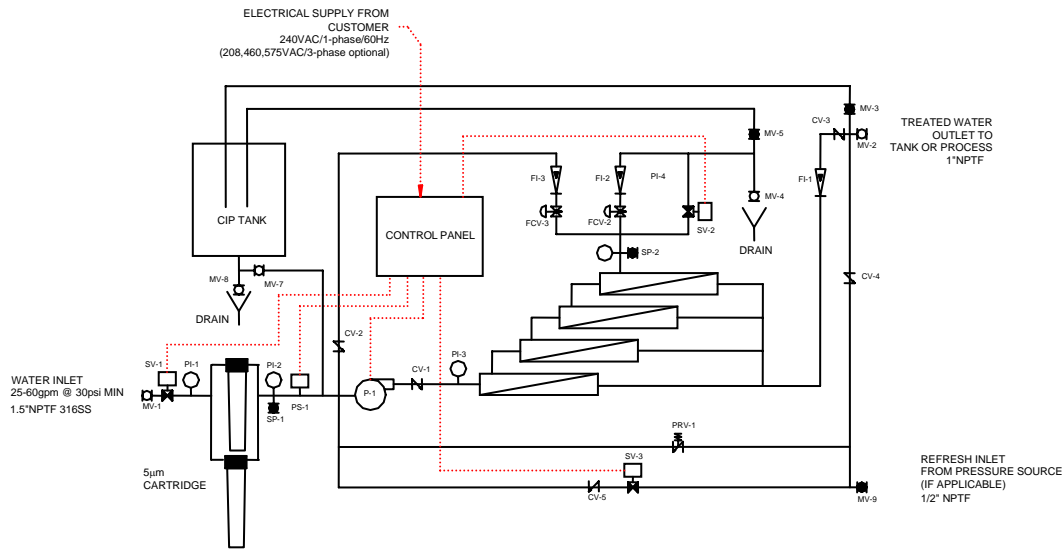
- Drinking water purification
- High quality industrial feed water
- Boiler feed water
- Beverage manufacturing
- Wastewater Recovery

Options

- Pressure retention tank
- Colour touch-screen display
- Conductivity transmitter
- Flow transmitters
- Product quality divert
- Electronic monitoring and data logging
- Integrated pre-treatment
- Extra high pressure pump for very cold water applications



PROCESS FLOW DIAGRAM



SPECIFICATIONS

Model No.	SP8-3-RO	SP8-4-RO	SP8-6-RO	SP8-8-RO
Permeate Flow	17.5	23	30	45
Reject Flow	5.8	7.7	7.5	15
Inlet Flow	23.3	30.7	37.5	60
Nominal Recovery	75%	75%	80%	80%
GAC Pre-filter	Optional	Optional	Optional	Optional
Sediment Pre-filter	2x20"x4.5"x5µm (PP20B05)	2x20"x4.5"x5µm (PP20B05)	4x20"x4.5"x5µm (PP20B05)	4x20"x4.5"x5µm (PP20B05)
Electrical Supply (Std., other voltages available)	575/3/60	575/3/60	575/3/60	575/3/60
Pump Type	Grundfos CR	Grundfos CR	Grundfos CR	Grundfos CR
Pump Motor (Hp)	10	10	15	15
Membrane Model	AG-8040F	AG-8040F	AG-8040F	AG-8040F
Membrane Specs	8"x40"x350ft ² (TFC)	8"x40"x350ft ² (TFC)	8"x40"x350ft ² (TFC)	8"x40"x350ft ² (TFC)
Membrane Qty.	3	4	6	8
Vessel Qty.	1	2	3	4
Membranes/Vessel	3	2	2	2
Array Configuration	1	1-1	2-1	2-1-1
Inlet Pipe Size	1-1/2"	1-1/2"	1-1/2"	1-1/2"
Permeate Pipe Size	1"	1"	1"	1"
Reject Pipe Size	1"	1"	1"	1"
Feed Control	1.5" Auto Solenoid Valve	1.5" Auto Solenoid Valve	1.5" Auto Solenoid Valve	1.5" Auto Solenoid Valve
Reject Control	1" Globe Valve w/Flow Indicator	1" Globe Valve w/Flow Indicator	1" Globe Valve w/Flow Indicator	1" Globe Valve w/Flow Indicator
Recycle Control	1" Globe Valve w/Flow Indicator	1" Globe Valve w/Flow Indicator	1" Globe Valve w/Flow Indicator	1" Globe Valve w/Flow Indicator
Permeate Control	Flow Indicator	Flow Indicator	Flow Indicator	Flow Indicator
Approx Dim. (in)	144"L x 30"W x 68"H	104"L x 30"W x 68"H	104"L x 30"W x 68"H	104"L x 30"W x 68"H
Approx Weight (lbs)	950 lbs	1000 lbs	1100 lbs	1200 lbs

